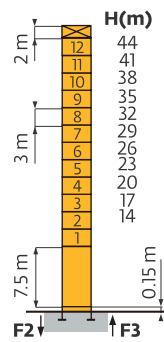




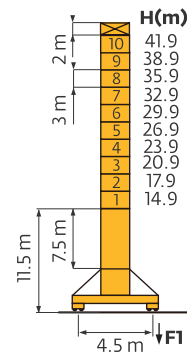
Mat / Réactions  
 Maste / Eckdrücke  
 Masts / Reactions  
 Mástil / Reacciones  
 Torre / Reazioni  
 Tramo / Reações  
 Композиции башни  
 / Реакции

□ 1.6 m  
 ▴ ▾ ▽ ▹ ▸  
 30 m → 60 m



**P16A**

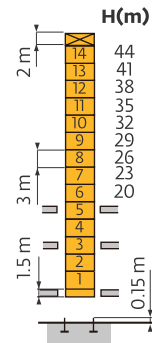
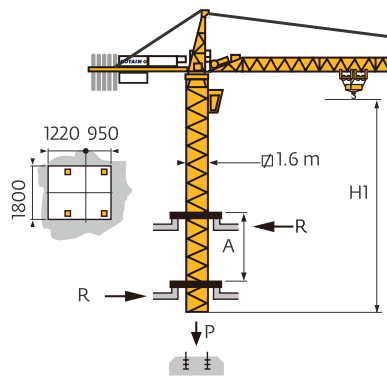
F2	● 99 t
	■ 141 t
F3	● 69 t
	■ 114 t
	▴ 37 t



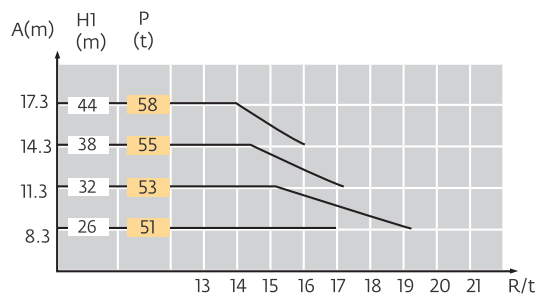
**SB16A**

F1	● 66 t
	■ 82 t
	▴ 43 t

Télescopage sur dalles  
 Kletterkrane im Gebäude  
 Climbing crane  
 Telescopage gruas  
 trepadoras  
 Gru in cavedio  
 Telescopagem sobre lages  
 Кран, ползущий внутри  
 здания



**BA45A**



**FR**

● Réactions en service

■ Réactions hors service

▴ A vide sans lest (ni train de transport) avec flèche et hauteur maximum

**DE**

Reaktionskräfte in Betrieb

Reaktionskräfte außer Betrieb

Ohne Last, Ballast (und Transportachse), mit Maximalausleger und Maximalhöhe

**EN**

Reactions in service

Reactions out of service

Without load, ballast (or transport axles), with maximum jib and maximum height

**ES**

Reacciones en servicio

Reacciones fuera de servicio

Sin carga, sin lastre, (ni tren de transporte), flecha y altura máxima

**IT**

Reazioni in servizio

Reazioni fuori servizio

A vuoto, senza zavorra (ne assali di trasporto) con braccio massimo e altezza massima

**PT**

Reações em serviço

Reações fora de serviço

Sem carga (nem trem de transporte)- sem lastro - com lança e altura máximas

**RU**

Реакции при работе

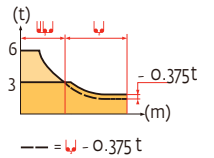
Реакции в покое

Вес без груза, балласта (или транспортных осей), с максимальной длиной стрелы и максимальной высотой

Courbes de charges  
Lastkurven  
Load diagrams  
Curvas de cargas  
Curve di carico  
Curva de cargas  
Диаграммы  
грузоподъемностей



60 m	3.1 m	14.7	17	19	20	21	24	25.6	28.2	33	35	38	39	40	43	46	49	50	53	55	57	60	m
		6.0	5.0	4.4	4.1	3.9	3.3	3.0	3	2.5	2.3	2.1	2.05	1.95	1.8	1.65	1.5	1.45	1.35	1.3	1.25	1.15	t
55 m	3.1 m		17.1	19	20	21	24	27	29.9	33	35	38	39	40	43	46	49	50	53	55			m
			6.0	5.3	5.0	4.7	4.0	3.4	3.0	3.0	2.8	2.55	2.45	2.4	2.2	2.0	1.85	1.8	1.7	1.6			t
50 m	3.1 m				20	21	24	27	30	33	34.9												m
					6.0	5.6	4.8	4.2	3.6	3.2	3.0	3.0	2.95	2.9	2.65	2.45	2.25	2.2					t
40 m	3.1 m				20.1	21	24	27	30	33	35	35.1											m
					6.0	5.7	4.8	4.2	3.7	3.3	3.0	3.0	3.0	2.9									t
30 m	3.1 m				20.2	21	24	27	30														m
					6.0	5.7	4.9	4.2	3.7														t



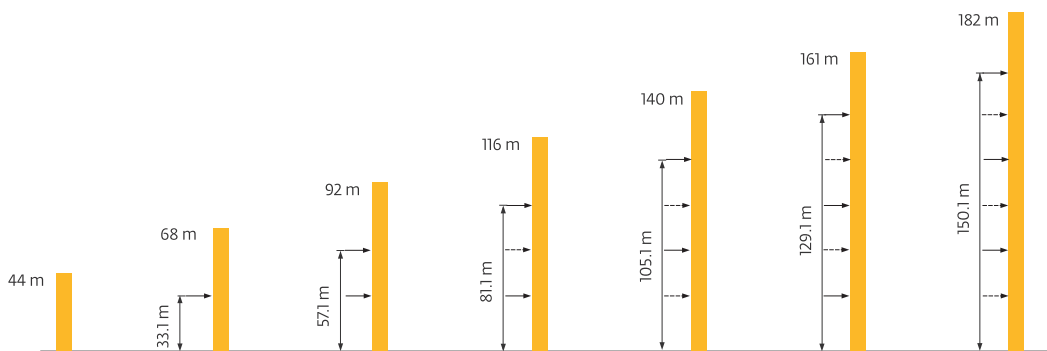
Lest de contre-flèche  
Gegenauslegerballast  
Counter-jib ballast  
Lastre de contra flecha  
Contrappeso  
Lastros da contra lança  
Балласт на консоли

	3450 - 2250 kg				3700 - 2250 kg			
		3450 kg	2250 kg	▲ (kg)		3700 kg	2250 kg	▲ (kg)
60 m	14.3 m	5	0	17250	14.3 m	4	1	17050
55 m	-	-	-	-	13 m	5	0	18500
50 m	13 m	4	1	16050	13 m	4	1	17050
40 m	13 m	4	0	13800	13 m	2	3	14150
30 m	13 m	2	2	11400	13 m	2	2	11900

Lest de base  
Grundballast  
Base ballast  
Lastre de base  
Zavorra di base  
Lastros da base  
Базовый балласт

1.6 m	SB16A	H (m)	41.9	38.9	35.9	32.9	29.9	26.9	23.9	20.9	17.9	14.9
		▲ (t)	78	66	66	60	60	60	54	54	54	54

Ancrages  
Verankerungen  
Anchorages  
Anclaje  
Ancoraggio  
Ancoragem  
Рамки для крепления  
к зданию



	FR	DE	EN	ES	IT	PT	RU
<b>A</b>	Distance entre cadres	Abstand zwischen den Rahmen	Distance between collars	Distancia entra marcos	Distanza fra i telai	Distância entre quadros	Расстояние между рамками крепления
<b>H</b>	Hauteur grue	Kranhöhe	Crane height	Altura grúa	Altezza gru	Altura da grua	Высота крана
<b>P</b>	Poids de la grue(enservice)	Krangewicht (in Betrieb)	Crane weight (in service)	Peso de la grúa (en servicio)	Peso della gru (in servizio)	Peso da grua (em serviço)	Вес крана (при работе)
<b>R</b>	Réaction horizontale	Horizontalkräfte	Horizontal reaction	Reaccion horizontal	Reazione orizzontale	Reacção horizontal	Горизонтальные реакции

Mécanismes  
Antriebe  
Mechanisms  
Mecanismos  
Meccanismi  
Mecanismos  
Механизмы

400 V(+10% -10%) 50 Hz									hp	kW	
	<b>33PC15 (GH)</b>	m/min	10	40	80	5	20	40	33	24	400 m
		t	3	3	1.5	6	6	3			
	<b>33PC15</b>	m/min	6	37.6	75	3	19	37.5	33	24	260 m
		t	3	3	1.5	6	6	3			
	<b>4D3V3</b>	m/min	15 → 30 → 58						4	3	
	<b>RCV145</b>	tr/min	0 → 0.8						2 × 6	2 × 4.4	
	<b>RT324C1</b>	m/min	12.5 → 25						2 × 7	2 × 5.2	

	IEC 60204-32		kVA
400 V(+10% -10%) 50 Hz		33PC 50kVA	

480 V(+ 6% -10%) 60 Hz									hp	kW	
	<b>33PC15 (GH)</b>	m/min	12	48	96	6	24	48	39.6	28.8	400 m
		t	3	3	1.5	6	6	3			
	<b>33PC15</b>	m/min	7.2	45.12	90	3.6	22.8	45	39.6	28.8	260 m
		t	3	3	1.5	6	6	3			
	<b>4D3V3</b>	m/min	18 → 36 → 69.6						4.8	3.6	
	<b>RCV145</b>	tr/min	0 → 0.96						2 × 7.2	2 × 5.28	
	<b>RT324C1</b>	m/min	15 → 30						2 × 8.4	2 × 6.24	

	IEC 60204-32		kVA
480 V(+ 6% -10%) 60 Hz		33PC 60kVA	

**FR**

**DE**

**EN**

**ES**

**IT**

**PT**

**RU**



Leverage  
Distribution  
Orientation  
Translation

Heben  
Katzfahren  
Schwenken  
Kranfahren

Hoisting  
Trolleying  
Slewing  
Travelling

Elevación  
Distribución  
Orientación  
Traslación

Sollevamento  
Distribuzione  
Rotazione  
Traslazione

Elevação  
Distribuição  
Rotação  
Translação

Подъем  
Перемещение каретки  
Поворот  
Перемещение крана



Document commercial non contractuel. Pour toute information technique se référer à la notice correspondante.

Unverbindliches Vertriebsdokument. Für technische Informationen, siehe die entsprechenden Anweisungen.

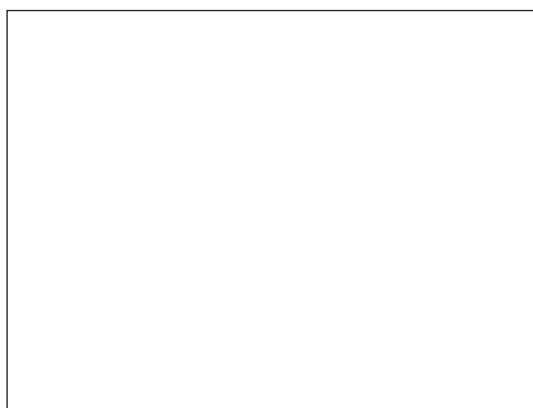
This commercial document is not legally binding. For any technical information, please refer to the corresponding instructions.

Documento commercial no contractual. Para cualquier información técnica, ver la noticia correspondiente.

Documento commerciale non vincolante, per tutte le informazioni tecniche fare riferimento al catalogo istruzioni.

Documento comercial não contratual. Para qualquer informação técnica complementar consultar as respectivas instruções.

Этот коммерческий документ не является юридически обязательным. Для получения технической информации, см. соответствующие инструкции.



**Manitowoc**

**Manitowoc - Americas**  
Manitowoc, Wisconsin, USA  
Tel: +1 920 684 6621 • Fax: +1 920 683 6278  
Shady Grove, Pennsylvania, USA  
Tel: +1 717 597 8121 • Fax: +1 717 597 4062

**Manitowoc - Europe, Middle East & Africa**  
Ecully, France  
Tel: +33 (0)4 7 218 2020 • Fax: +33 (0)4 7 218 2000

**Manitowoc - Asia Pacific**  
Shanghai, China  
Tel: +86 216 457 0066 • Fax: +86 216 457 4955