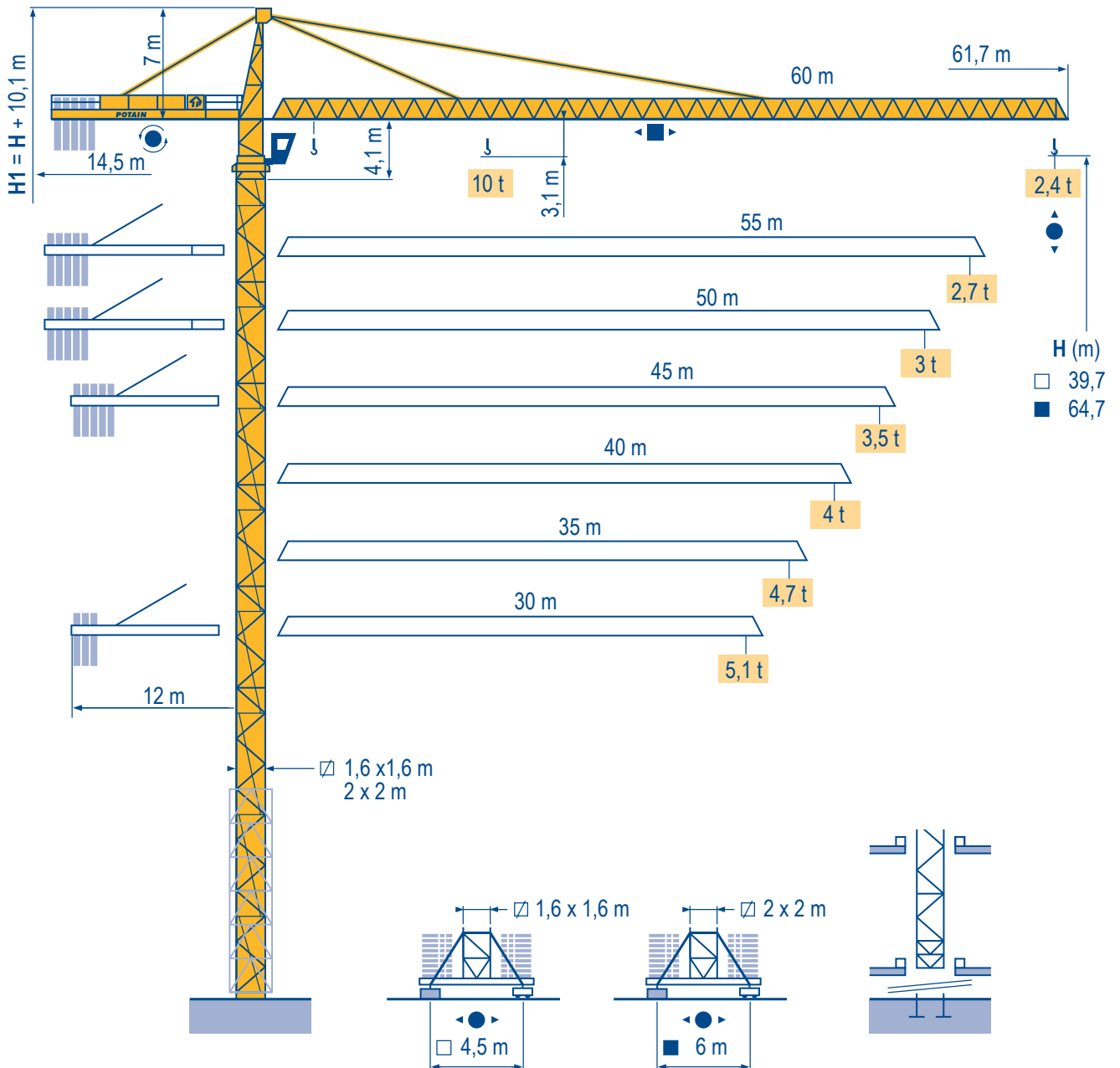


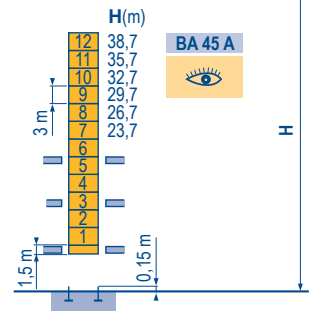
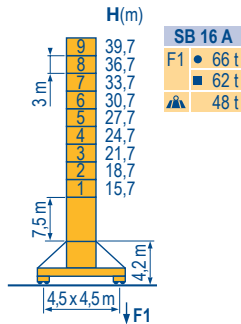
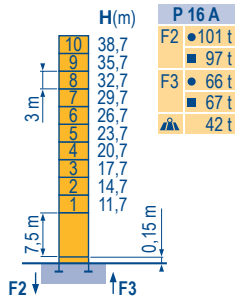
Potain MC 205 B



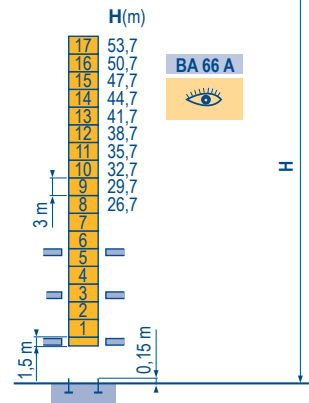
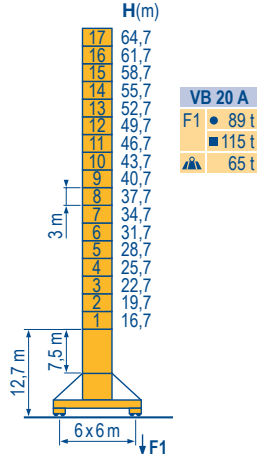
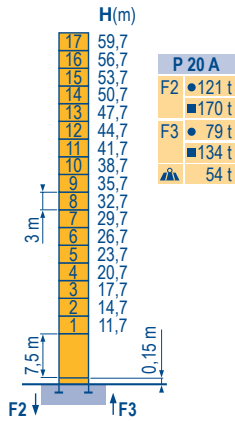
Masts /
Reactions
Композиции
башни /
Реакции

MDT 3

□ 1,6 m
▲ 30 m → 60 m

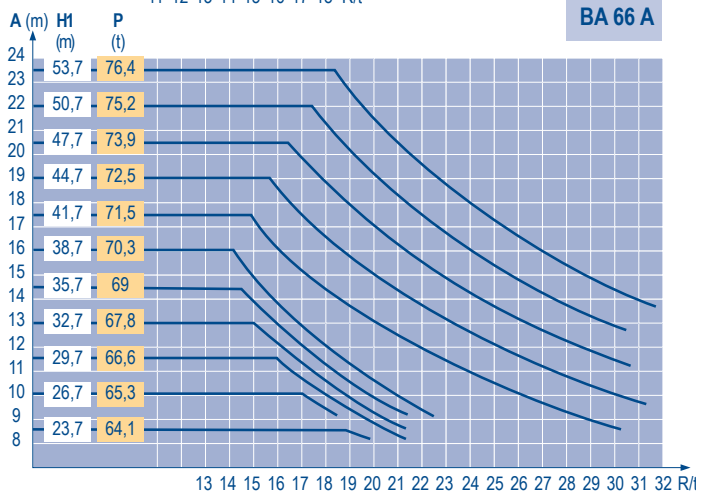
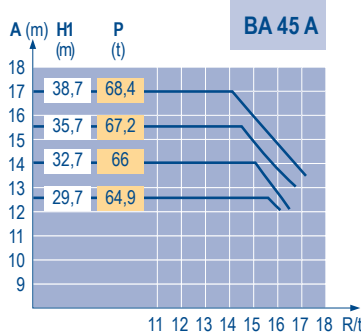
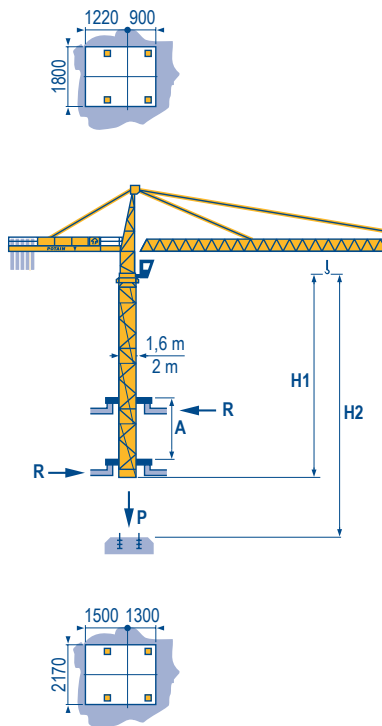


□ 2 m
▲ 30 m → 60 m



Climbing crane
Кран, ползущий внутри здания

MDT 3



ТОРКИТ
MC 205 B

Potain

EN

RU

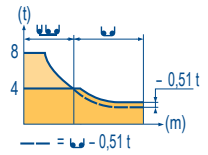
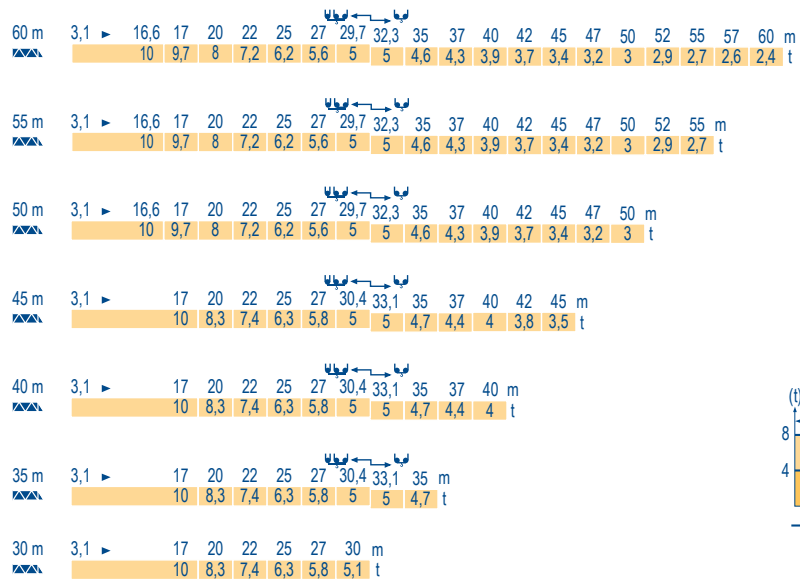
- Reactions in service
- Reactions out of service
- ▲ Without load, ballast (or transport axles), with maximum jib and maximum height.
- 👁 See climbing crane

- Реакции при работе
- Реакции в покое
- ▲ Вес без груза, балласта (или транспортных осей), с максимальной длиной стрелы и максимальной высотой.
- 👁 См. кран, ползущий внутри здания

Load diagrams

Диаграммы грузоподъемностей

MDT 2



Counter-jib ballast

Балласт на консоли

MDT 2

Length (m)	Counter-jib length (m)	Ballast (kg)
60 m	14,5 m	18 600
55 m	14,5 m	15 800
50 m	14,5 m	14 400
45 m	12 m	17 200
40 m	12 m	14 400
35 m	12 m	13 000
30 m	12 m	11 000

Base ballast

Базовый балласт

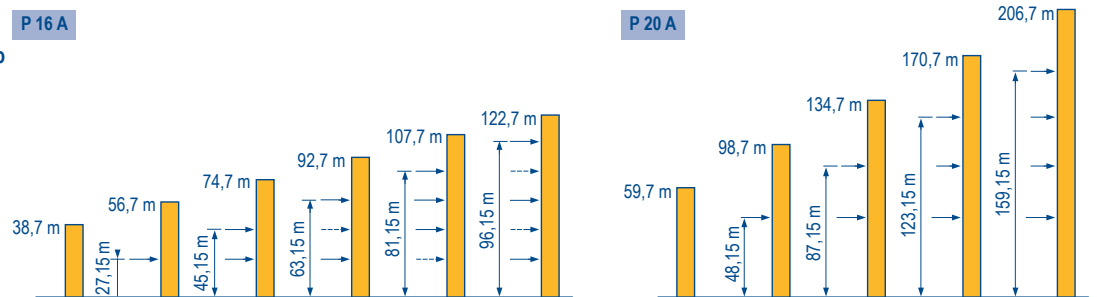
MDT 3

Length (m)	SB 16 A	VB 20 A
1,6 m	SB 16 A	VB 20 A
H (m)	39,7	64,7
H (t)	60	108
	36,7	61,7
	60	96
	33,7	58,7
	60	84
	30,7	55,7
	60	72
	27,7	52,7
	60	48
	24,7	49,7
	60	36
	21,7	46,7
	60	24
	18,7	43,7
	60	24
	15,7	40,7
	60	24
		37,7
		24
		34,7
		24
		31,7
		24
		28,7
		24
		25,7
		24
		22,7
		24
		19,7
		24
		16,7
		24
		13,7
		24

Anchorage

Рамки для крепления к зданию

MDT 3



TOPKIT

MC 205 B

Potain

EN








- A Distance between collars
- H1 Crane height
- P Crane weight (in service)
- R Horizontal reaction


RU








- Расстояние между рамками крепления
- Высота крана
- Вес крана (при работе)
- Горизонтальные реакции


Mechanisms
Механизмы

MDT 3

				0 → 44 → 88				0 → 22 → 44				ch - PS hp	kW					
	55 RCS 25	m/min	0	→	44	→	88	0	→	22	→	44	55	40,5	500 m			
		t			5		2,5			10		5						
	75 LVF 25 Optima	m/min	4	→	14	→	52	→	66	→	90	→	110	75	55	895 m		
		t	5		5		5		3,75		2,5		1,6	10	10	10	7,5	5
	5 D3 V4	m/min	15 - 30 - 58										5	3,7				
	RCV 145	tr/min U/min - rpm	0→0,8										2 x 6	2 x 4,4				
	SB 16 A R ≥ 10 m	RT 324 m/min	12,5→25										2 x 7	2 x 5,2				
	VB 20 A R ≥ 13 m	RT 544 A1 2V m/min	13,5→27										4 x 7	4 x 5,2				

CEI 38 	IEC 38	kVA
400 V (+6% -10%) 50 Hz		55 RCS : 75 kVA - 75 LVF : 100 kVA

				0 → 52 → 104				0 → 26 → 52				ch - PS hp	kW					
	55 RCS 25	m/min	0	→	52	→	104	0	→	26	→	52	66	48	500 m			
		t			5		2,5			10		5						
	75 LVF 25 Optima	m/min	4	→	14	→	52	→	66	→	90	→	110	75	55	895 m		
		t	5		5		5		3,75		2,5		1,6	10	10	10	7,5	5
	5 D3 V4	m/min	18 - 36 - 70										6	4,4				
	RCV 145	tr/min U/min - rpm	0→0,8										2 x 7	2 x 5,2				
	SB 16 A R ≥ 10 m	RT 324 m/min	12,5→25										2 x 7	2 x 5,2				
	VB 20 A R ≥ 13 m	RT 544 A1 2V m/min	13,5→27										4 x 7	4 x 5,2				

CEI 38 	IEC 38	kVA
480 V (+6% -10%) 60 Hz		55 RCS : 90 kVA - 75 LVF : 100 kVA

EN

-  Hoisting
-  Trolleying
-  Slewing
-  Travelling

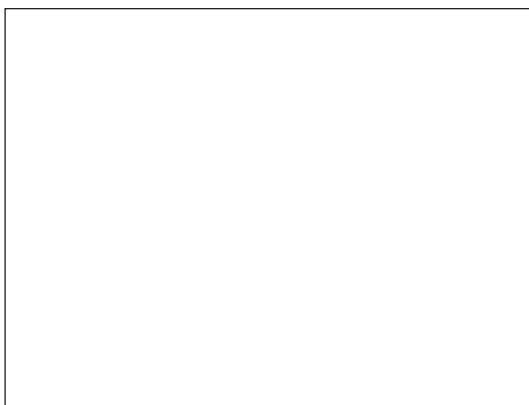
RU

- Подъем
- Перемещение каретки
- Поворот
- Перемещение крана



This commercial document is not legally binding.
For any technical information, please refer to the corresponding instructions.

Этот коммерческий документ не является юридически обязательным.
Для получения технической информации, см. соответствующие инструкции.



MC 205 B
Réf. 2009 35 MDT 3



Asia-Pacific Factories

China • No.55 East Zhen Bei Road, Zhangjiagang Economic Development Zone (South), Jiangsu Province, China 215618
Tel 86 512 58780 088 Fax 86 512 5878 0098

India • 72-76, Mundhwa Industrial Estate, Pune - 411 036, Maharashtra, India Tel 91 20 6644 5500 Fax 91 20 6644 5599

Regional Headquarters

Americas • Manitowoc, Wisconsin, USA • Tel 1 920 684 6621 Fax 1 920 683 6278

Europe, Middle East & Africa • Ecully, France • Tel 33 472 18 2020 Fax 33 472 18 2000

Asia Pacific • Shanghai, China • Tel 86 21 6457 0066 Fax 86 21 6457 4955